



**NO MORE**

**NONSENSE**

# NO MORE MYSTERY

## WHAT IS CELLULITE?

Cellulite is a depression of any shape or size seen on the surface of the skin. A major underlying cause of cellulite are the fibrous bands that tether skin to the structures below. **These bands are called septa.**<sup>1</sup>

## SEPTA ARE COMPLEX

**Previously misunderstood, we now know how complex septa really are.** They are unique to each woman and across different parts of the body. Some are good (and we want them!), but others stiffen or shrink over time leading to cellulite dimples.<sup>1</sup>

## WHAT CELLULITE ISN'T

First, cellulite is not our fault! Second, it's not laxity (a loss of elasticity in the skin), nor is it poor skin quality. **And last, cellulite is not fat!**

# WHAT IS AVÉLI™?

- Avéli™ is a minimally invasive in-office procedure for cellulite dimples on the buttocks and thighs<sup>1</sup>
- The Avéli™ procedure is a physician-controlled release of dimple-causing fibrous septa bands with real-time confirmation of release<sup>1</sup>
- Smoother skin is visible quickly after an Avéli™ procedure, once swelling and bruising subsides<sup>2</sup>



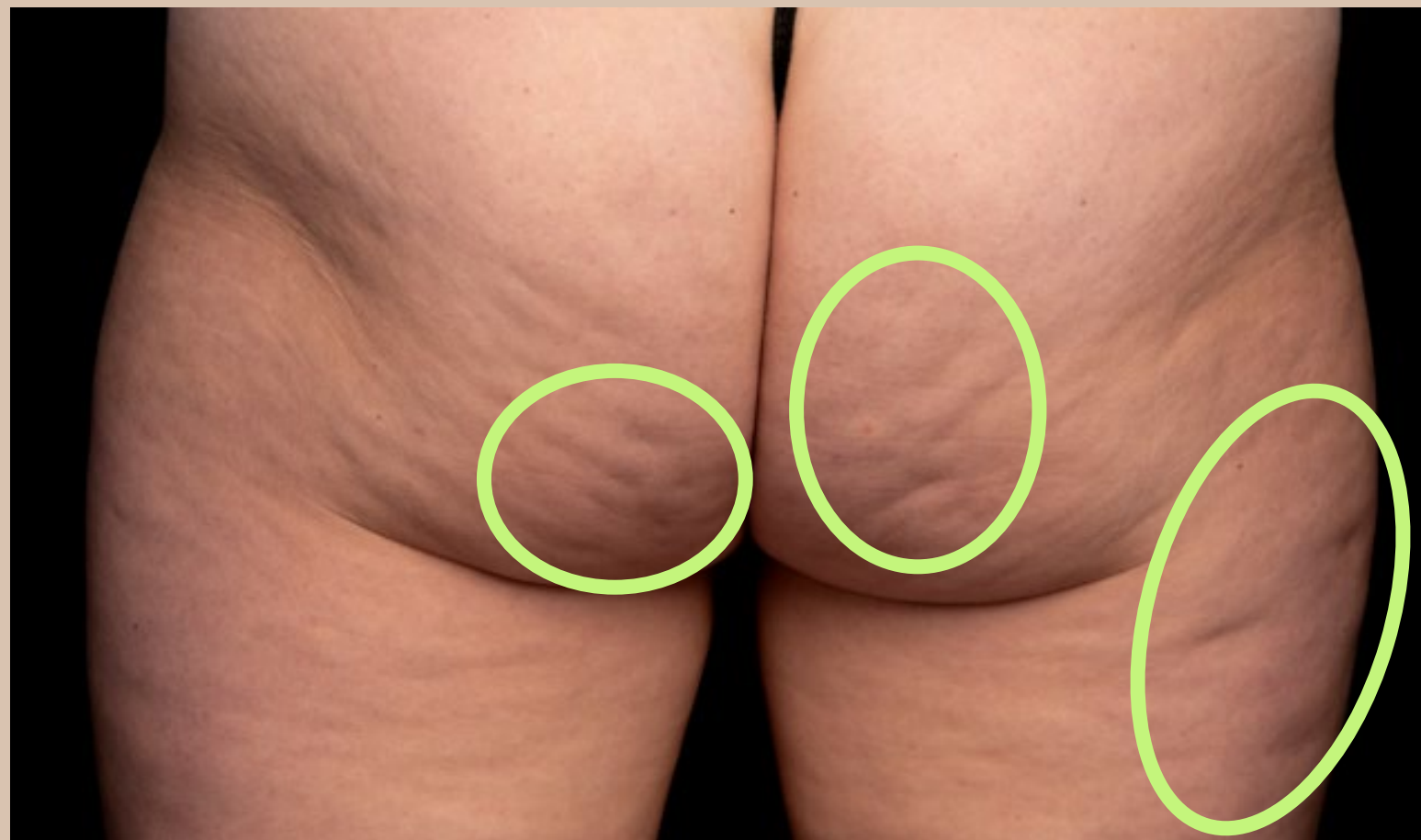
Avéli™ is indicated for temporary reduction in the appearance of cellulite in the buttocks and thigh areas of adult females as supported by clinical data demonstrating benefits through 3 months of observation.

1. Stevens WG, et al. Aesth Surg J 2021. Accepted for publication.  
2. Data on file. Revelle Aesthetics, Inc. 2021. 3 Month CSR-10629, Rev A.



# HONEST RESULTS ONLY

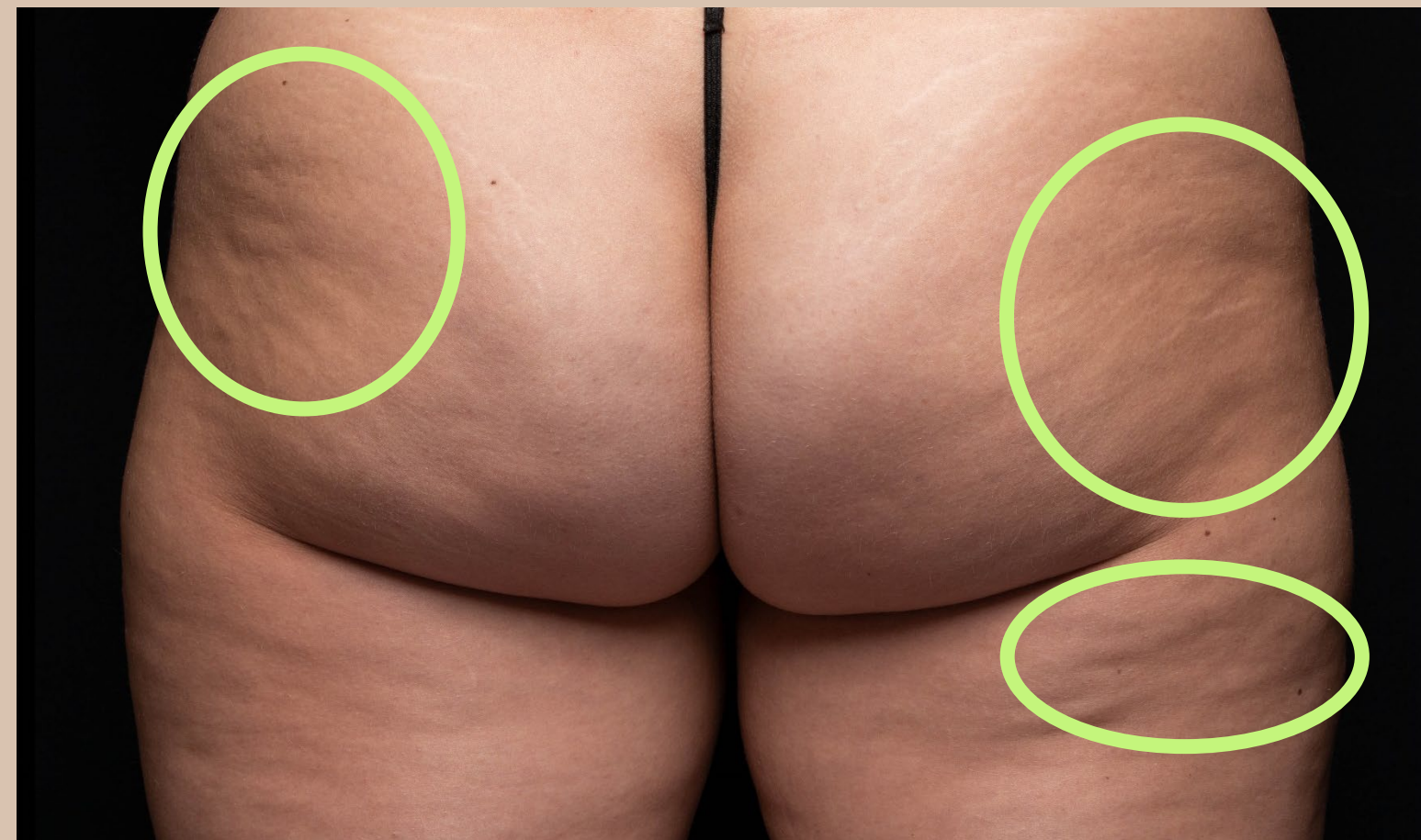
### DIMPLES



✓ **Avéli™ releases dimples**

Cellulite dimples are caused by shortened or thickened fibrous septa bands underneath the skin that are tethered to the structures below.<sup>1</sup>

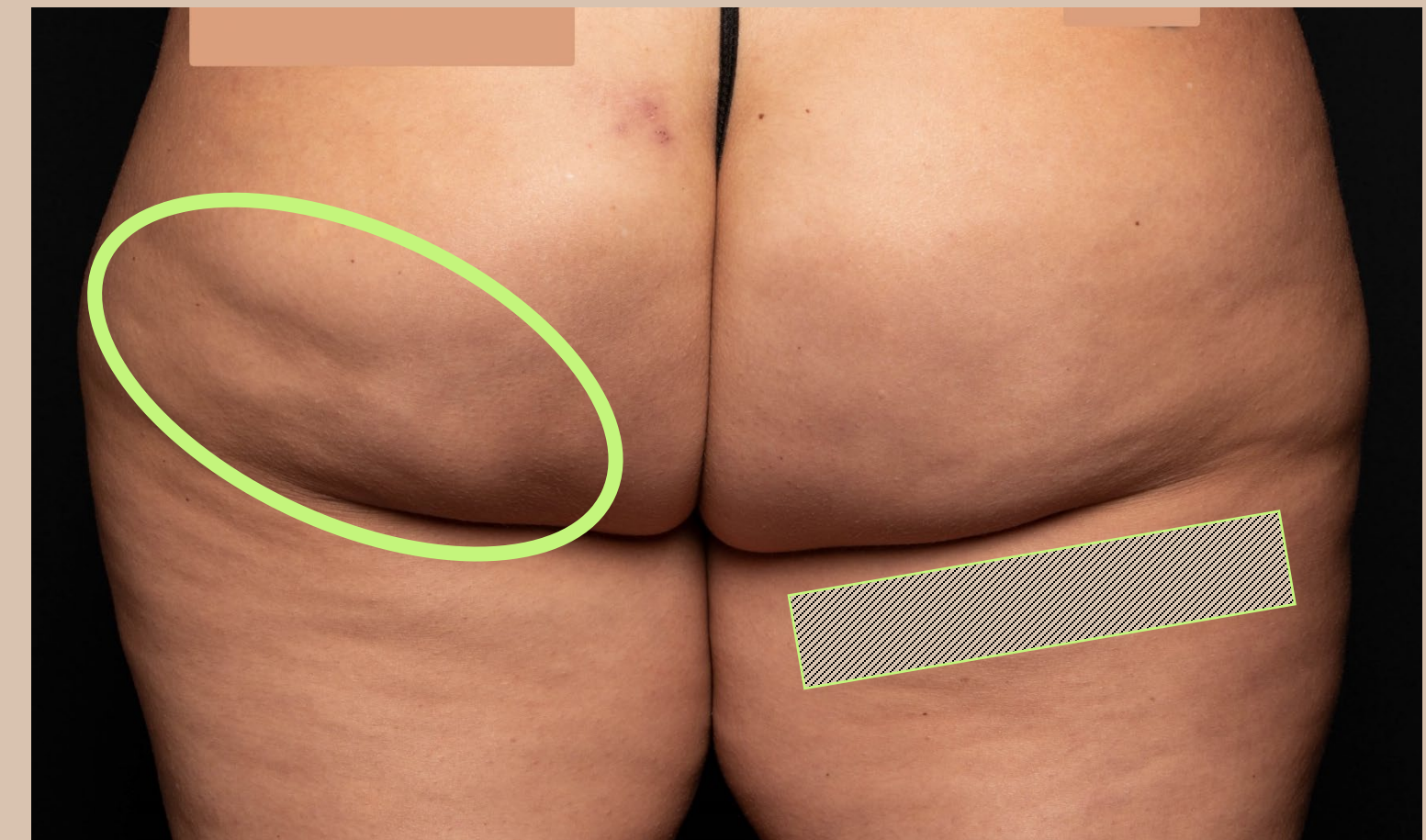
### LAXITY



✗ **Avéli™ does not treat laxity**

Laxity, or lax skin, is caused by a loss of elasticity, often correlated with a loss of collagen.<sup>2</sup>

### LOCALIZED ADIPOSITY (FAT)



✗ **Avéli™ does not treat fat**

Localized pockets of fat are sometimes seen alongside cellulite but are not addressed with this procedure.

*The area below the gluteal crease is also not treated with Avéli™.*

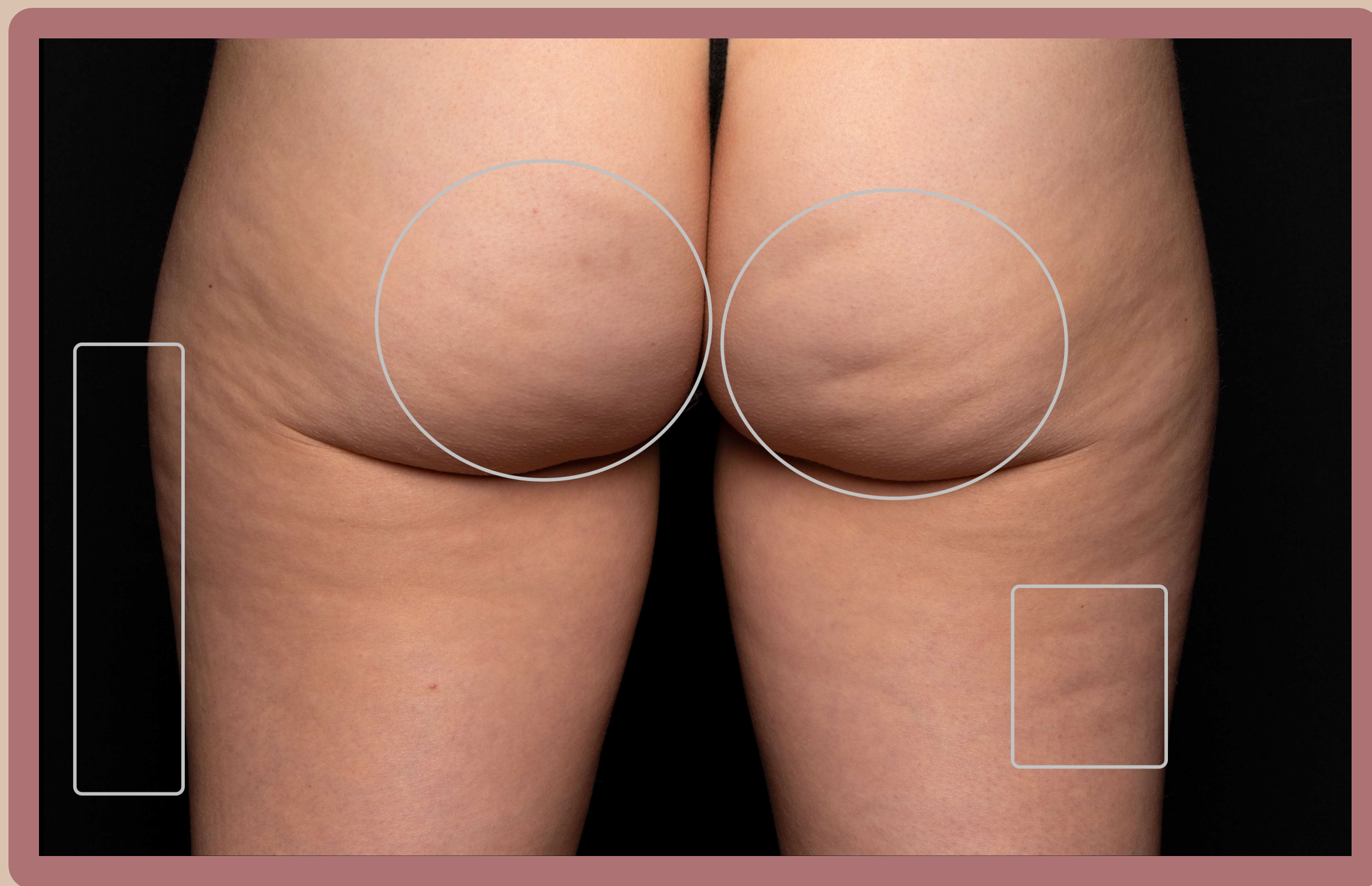
1. Stevens WG, et al. Aesth Surg J. 2021. Accepted for publication.  
2. Kaminer M, et al. Dermatol Surg 2019; 45:S12-S21.



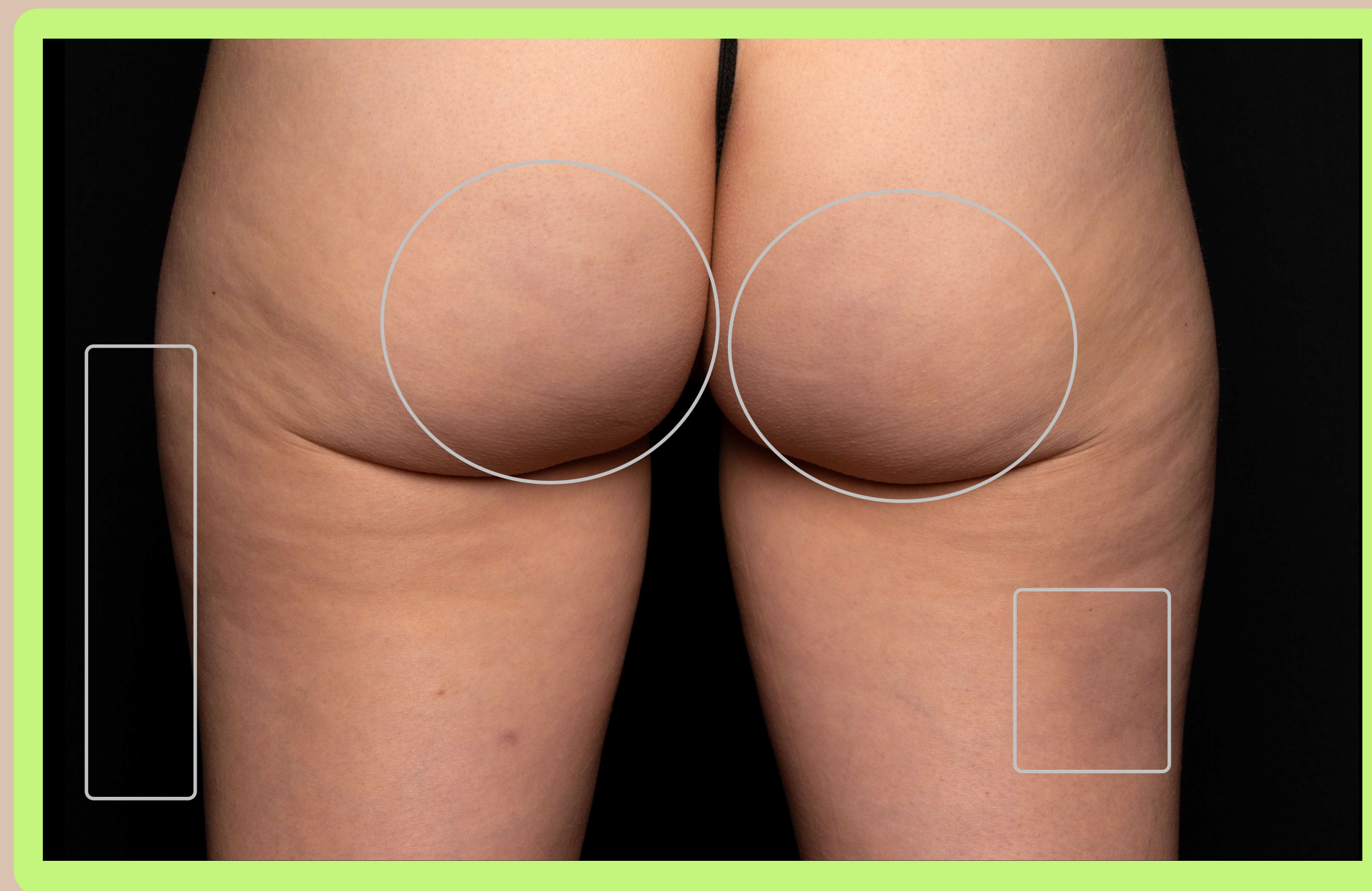
# BEFORE & AFTER PHOTOS



**BEFORE**



**AFTER 3 MONTHS**





**BEFORE**

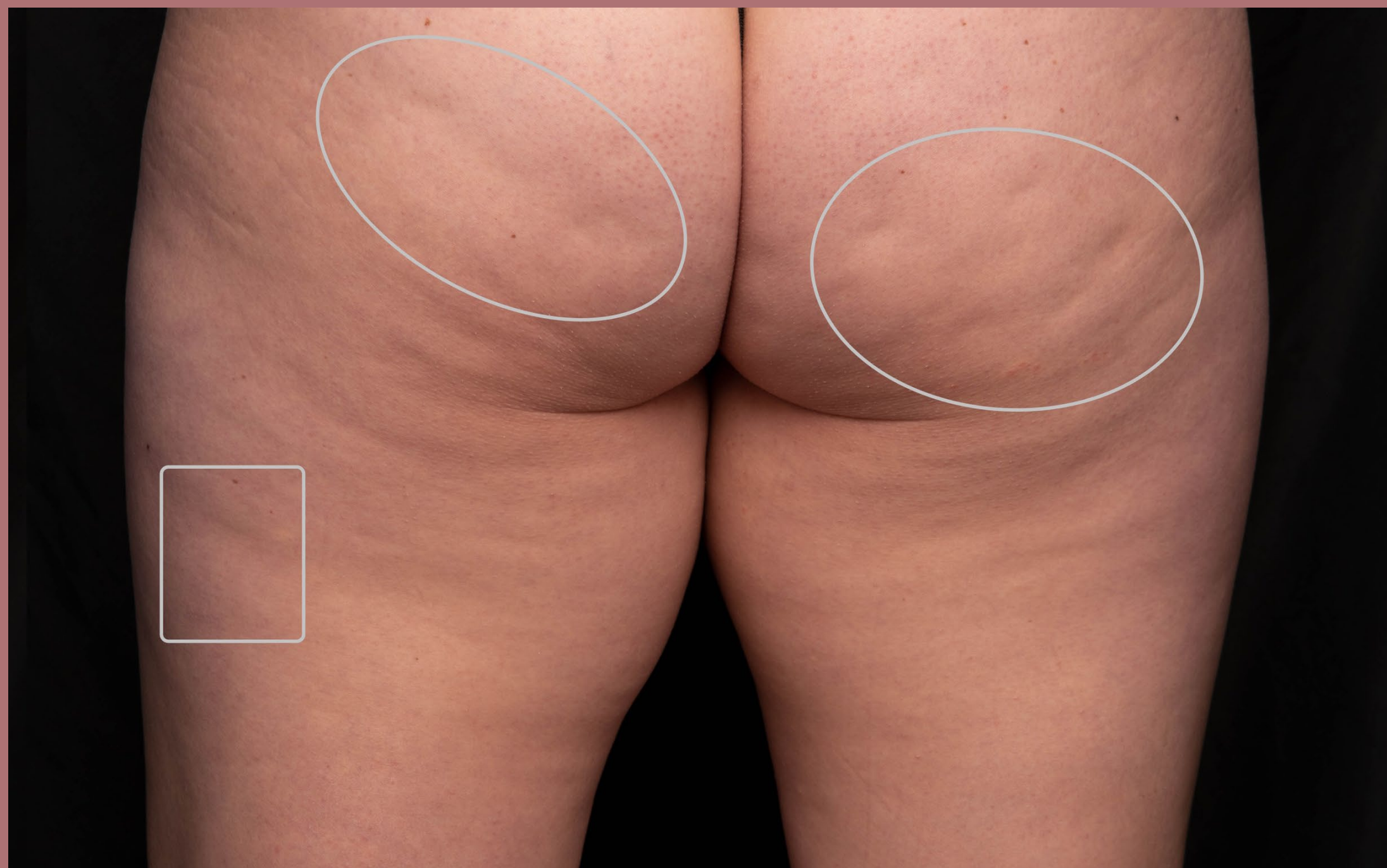


**AFTER 3 MONTHS**

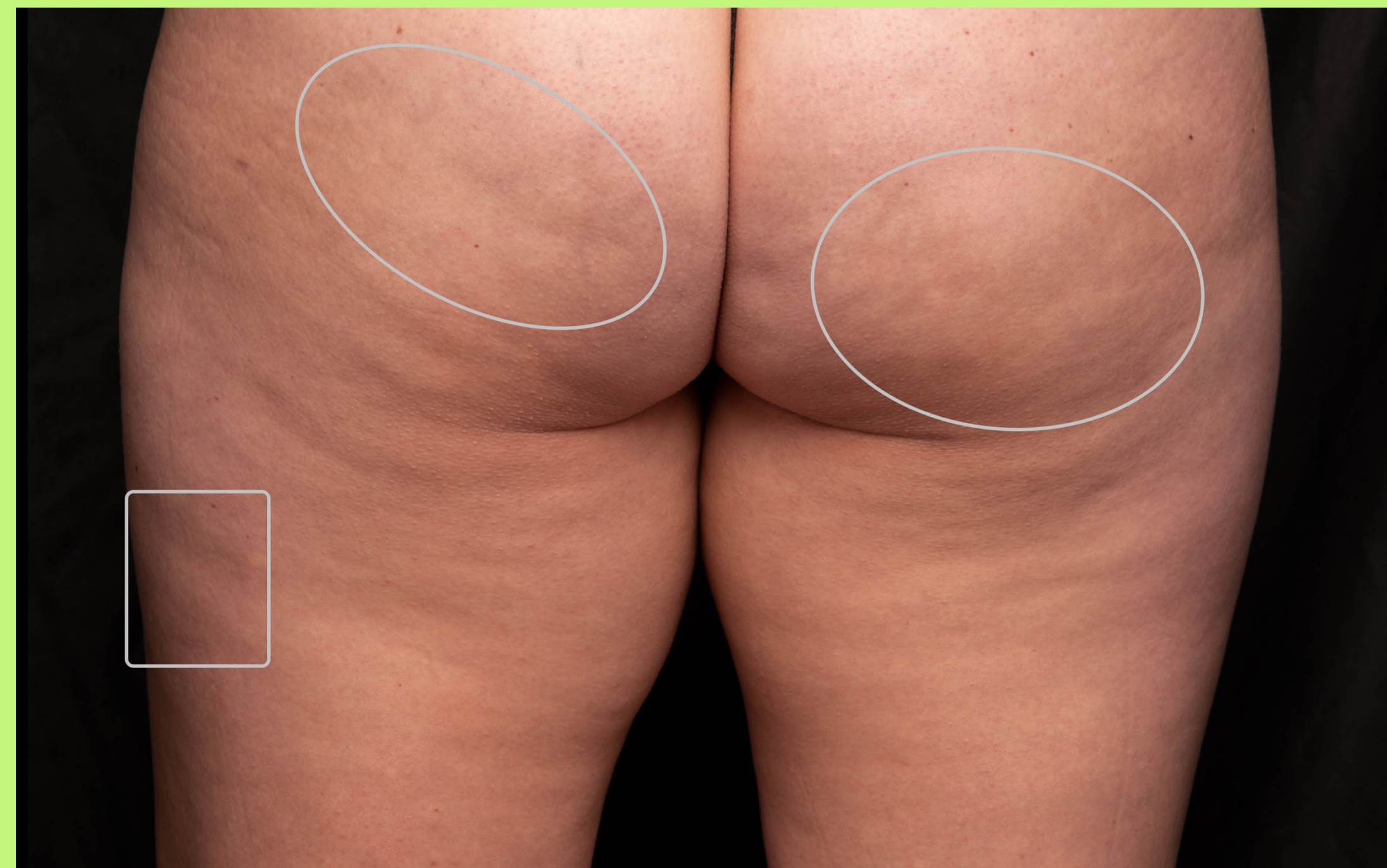




**BEFORE**



**AFTER 3 MONTHS**

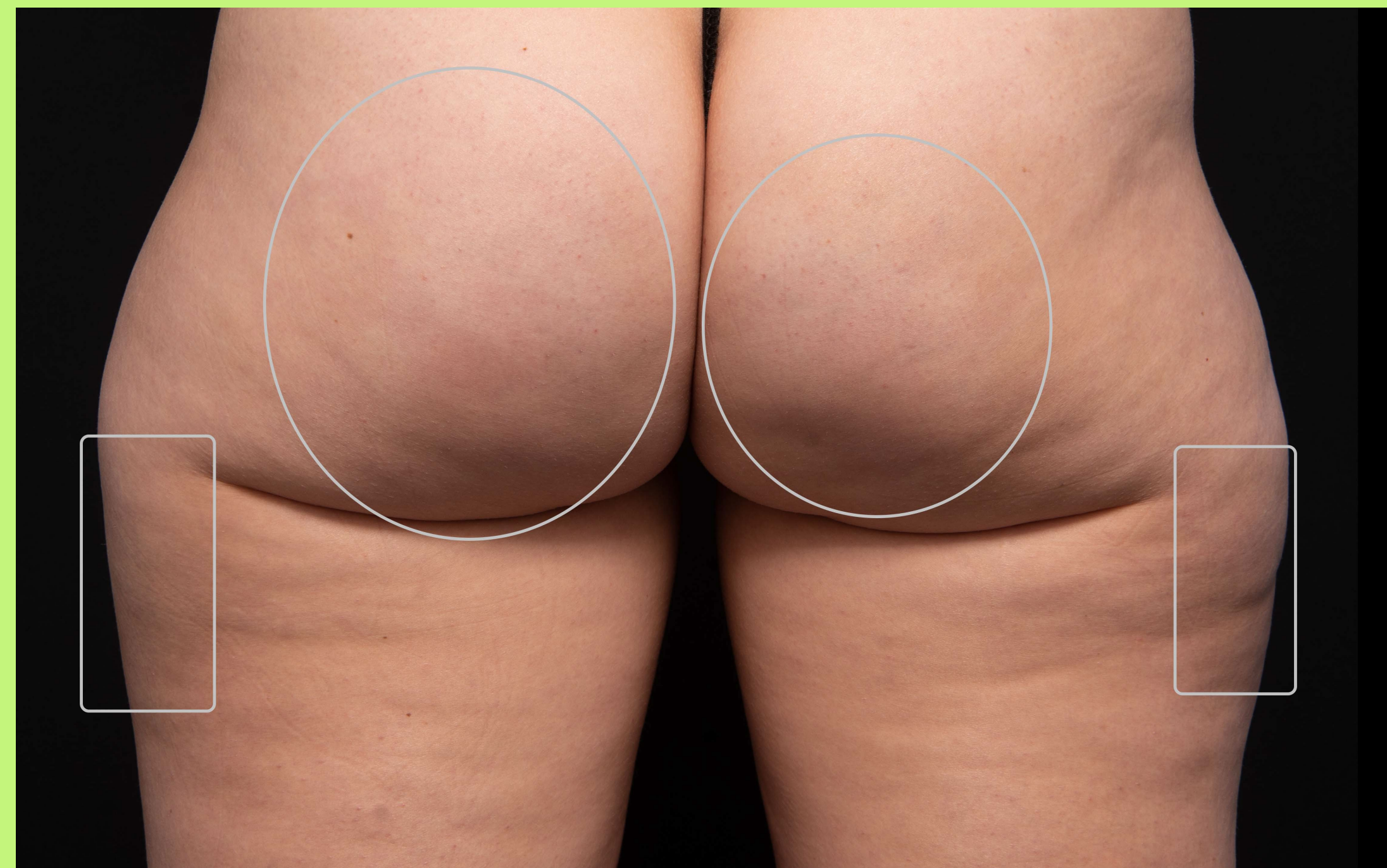




**BEFORE**



**AFTER 3 MONTHS**





**BEFORE**



**AFTER 3 MONTHS**





**BEFORE**



**AFTER 3 MONTHS**





**BEFORE**

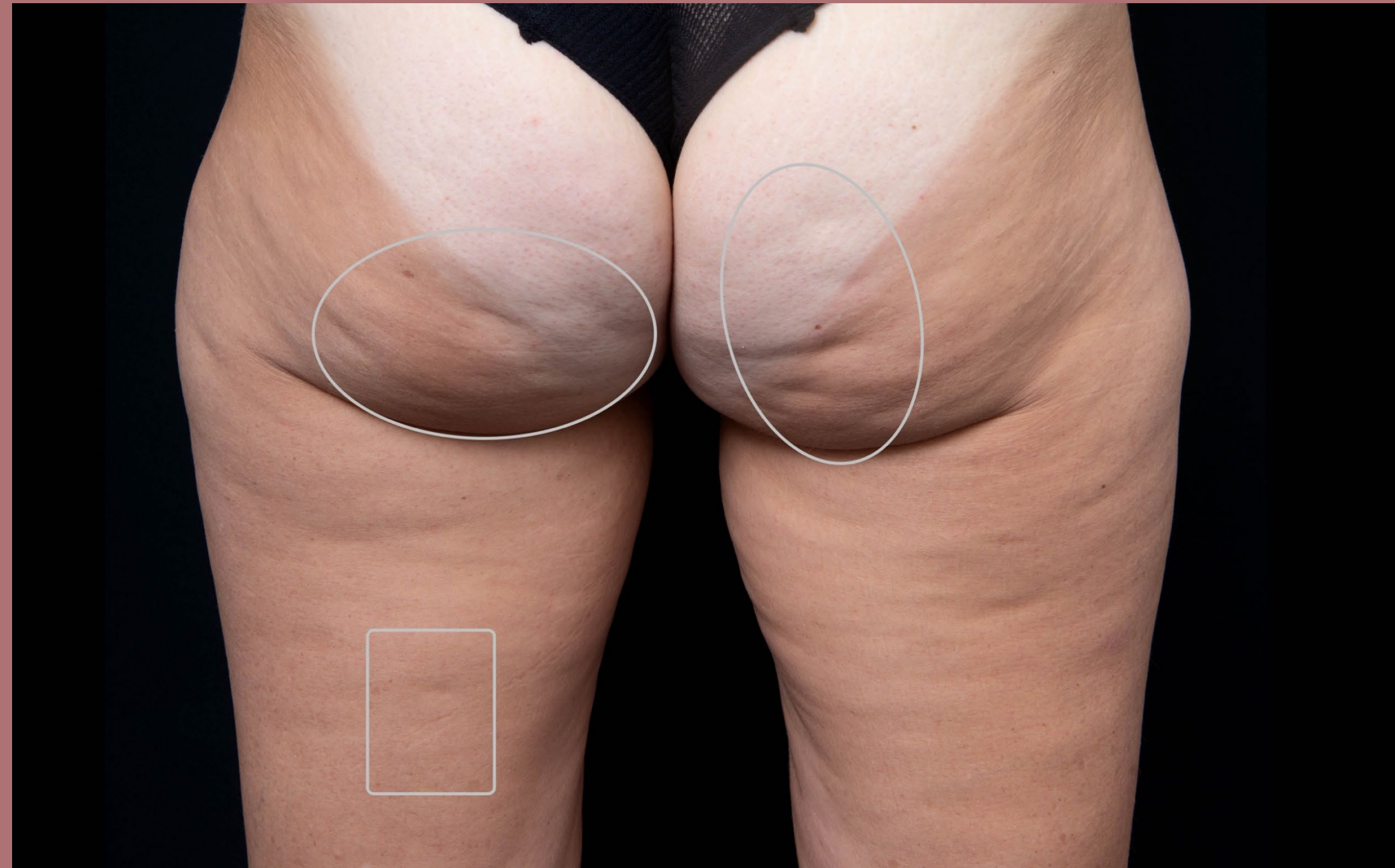


**AFTER 3 MONTHS**





**BEFORE**

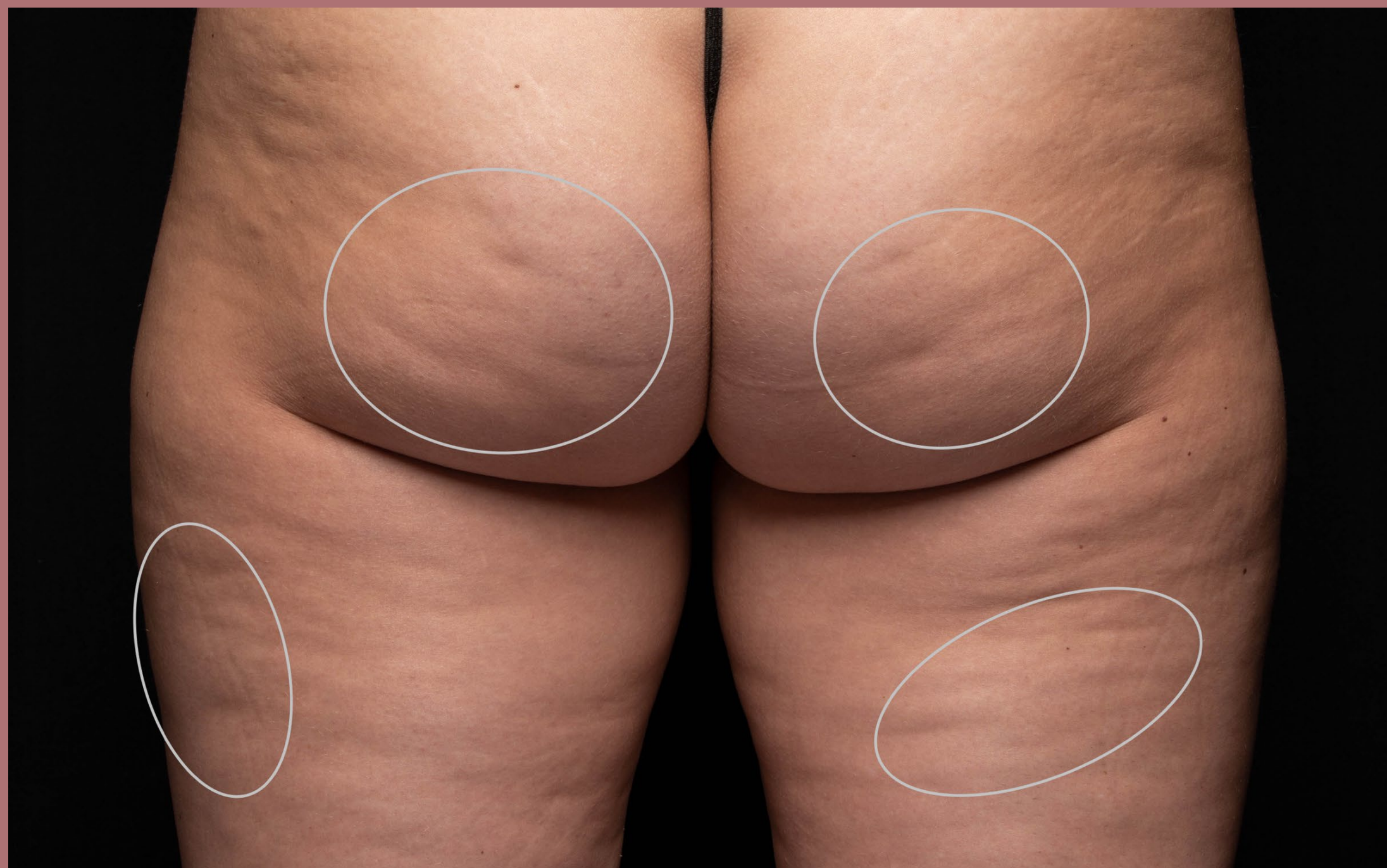


**AFTER 3 MONTHS**

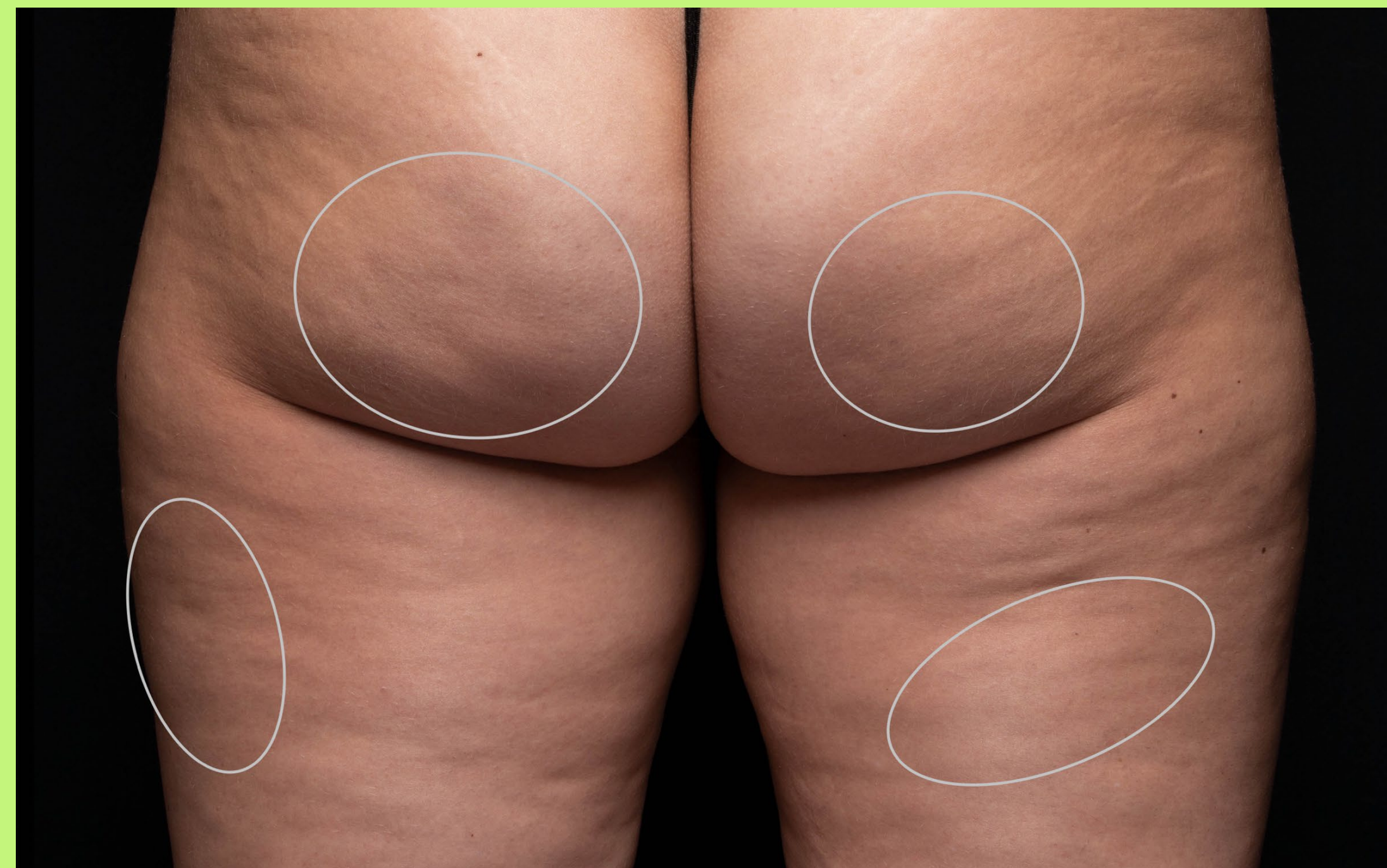




**BEFORE**

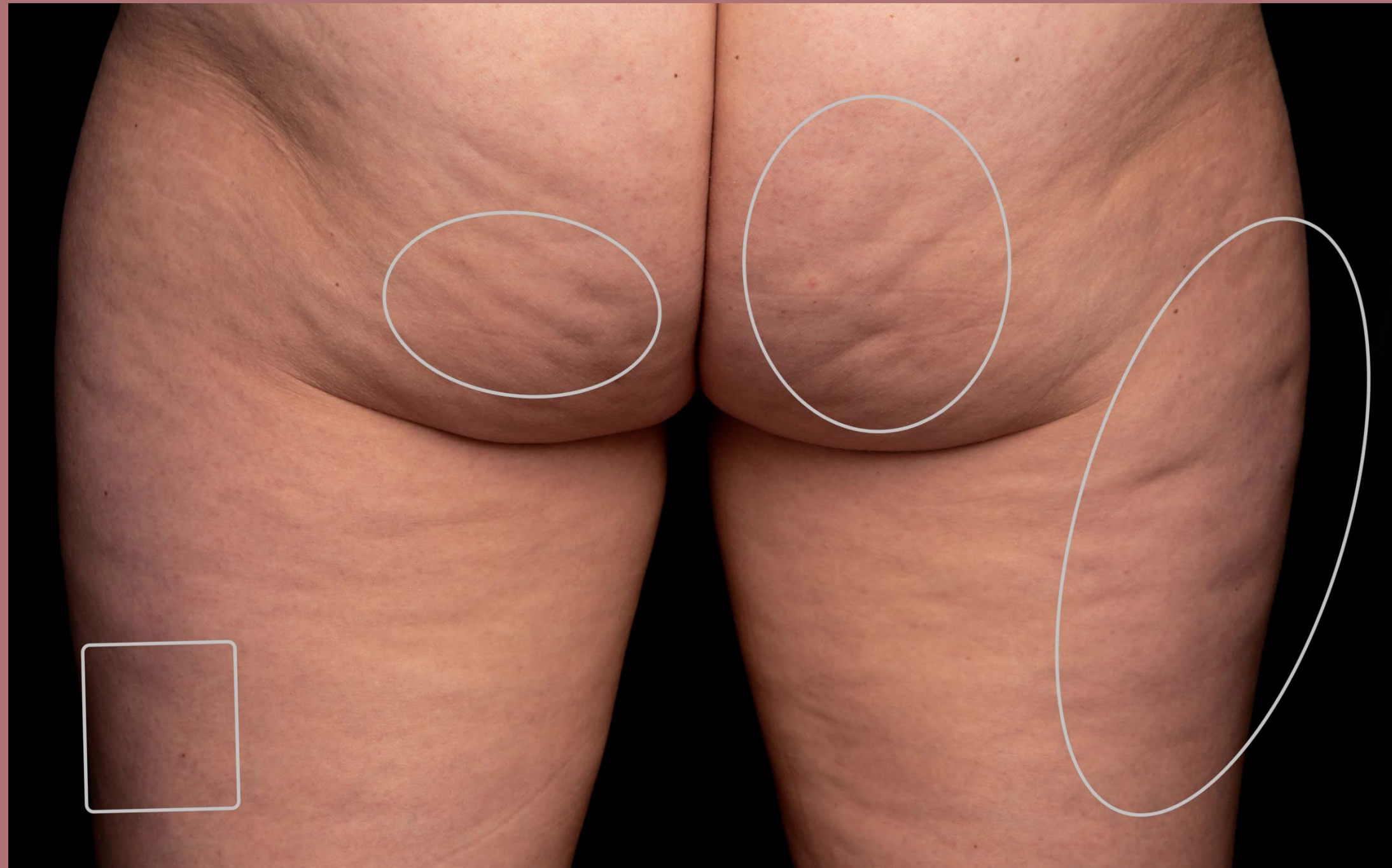


**AFTER 3 MONTHS**

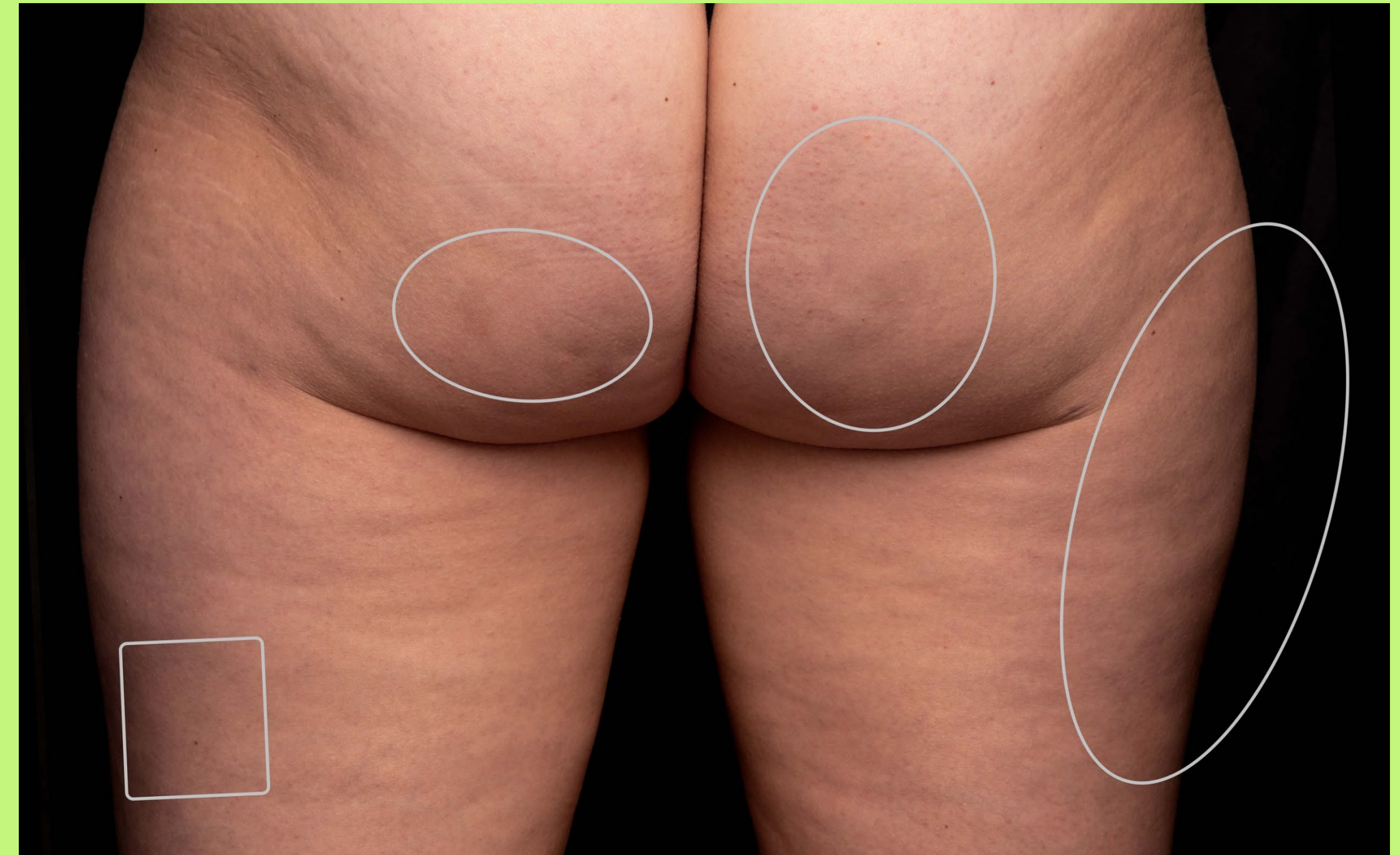




**BEFORE**



**AFTER 3 MONTHS**





**BEFORE**

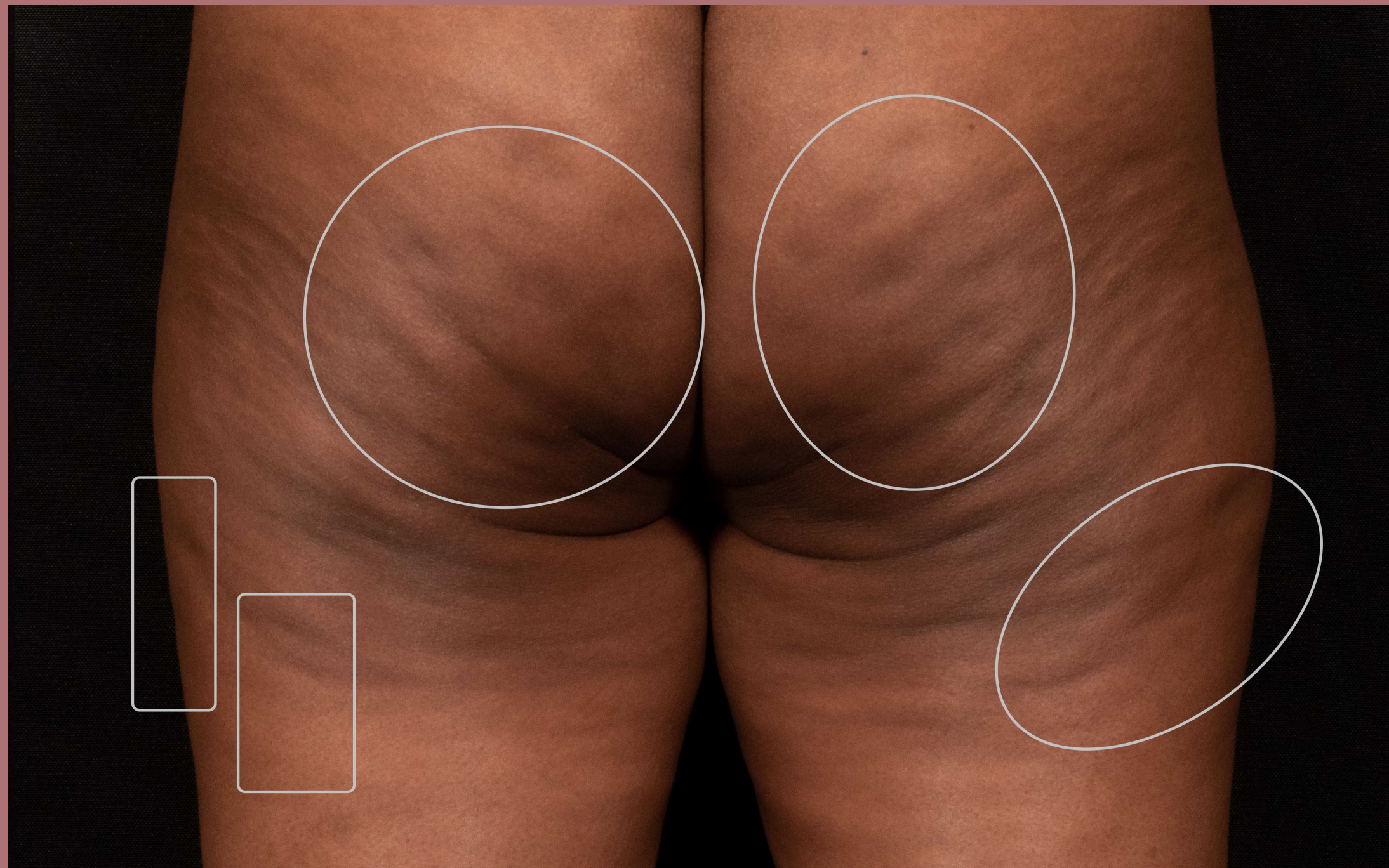


**AFTER 3 MONTHS**

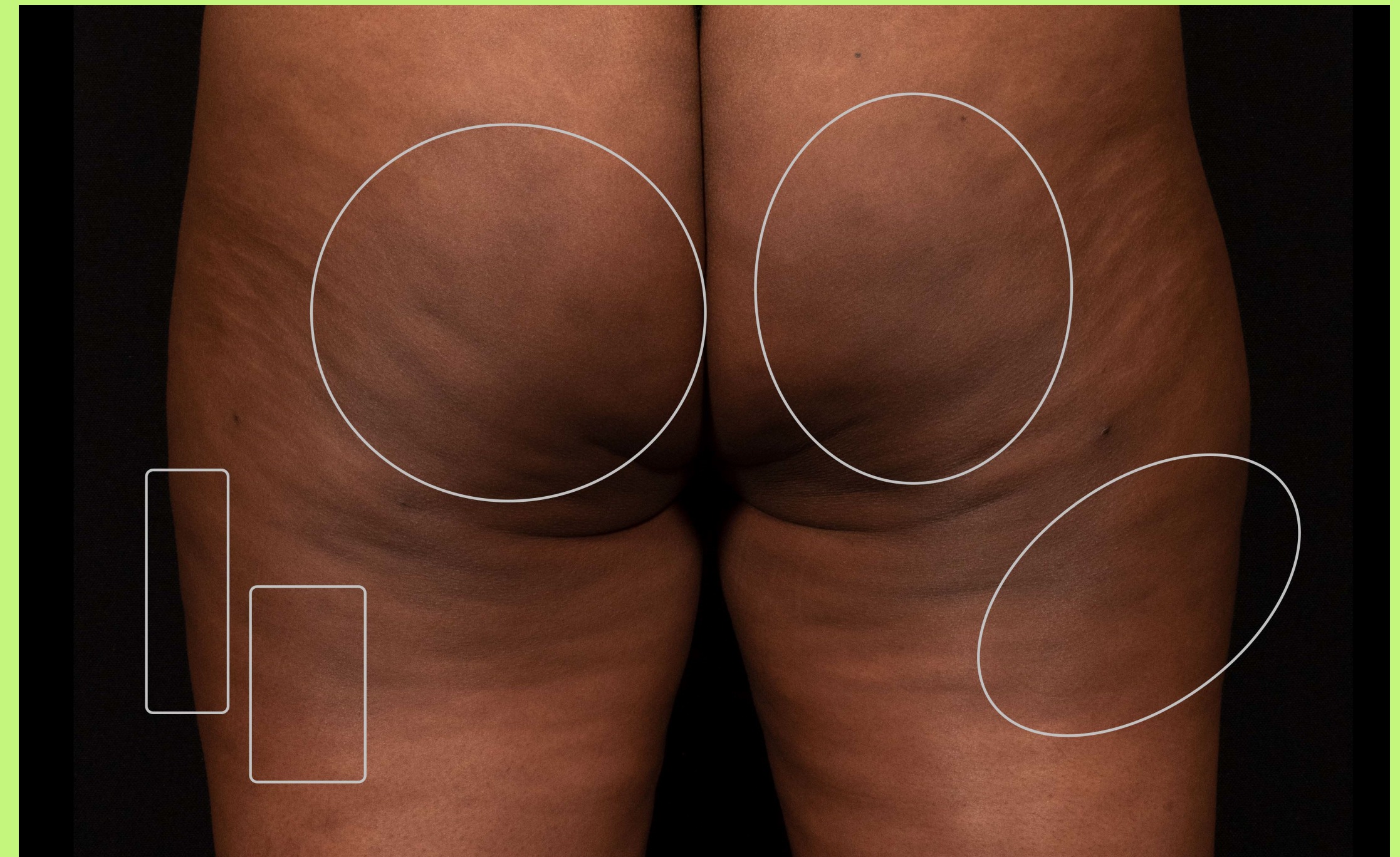




**BEFORE**

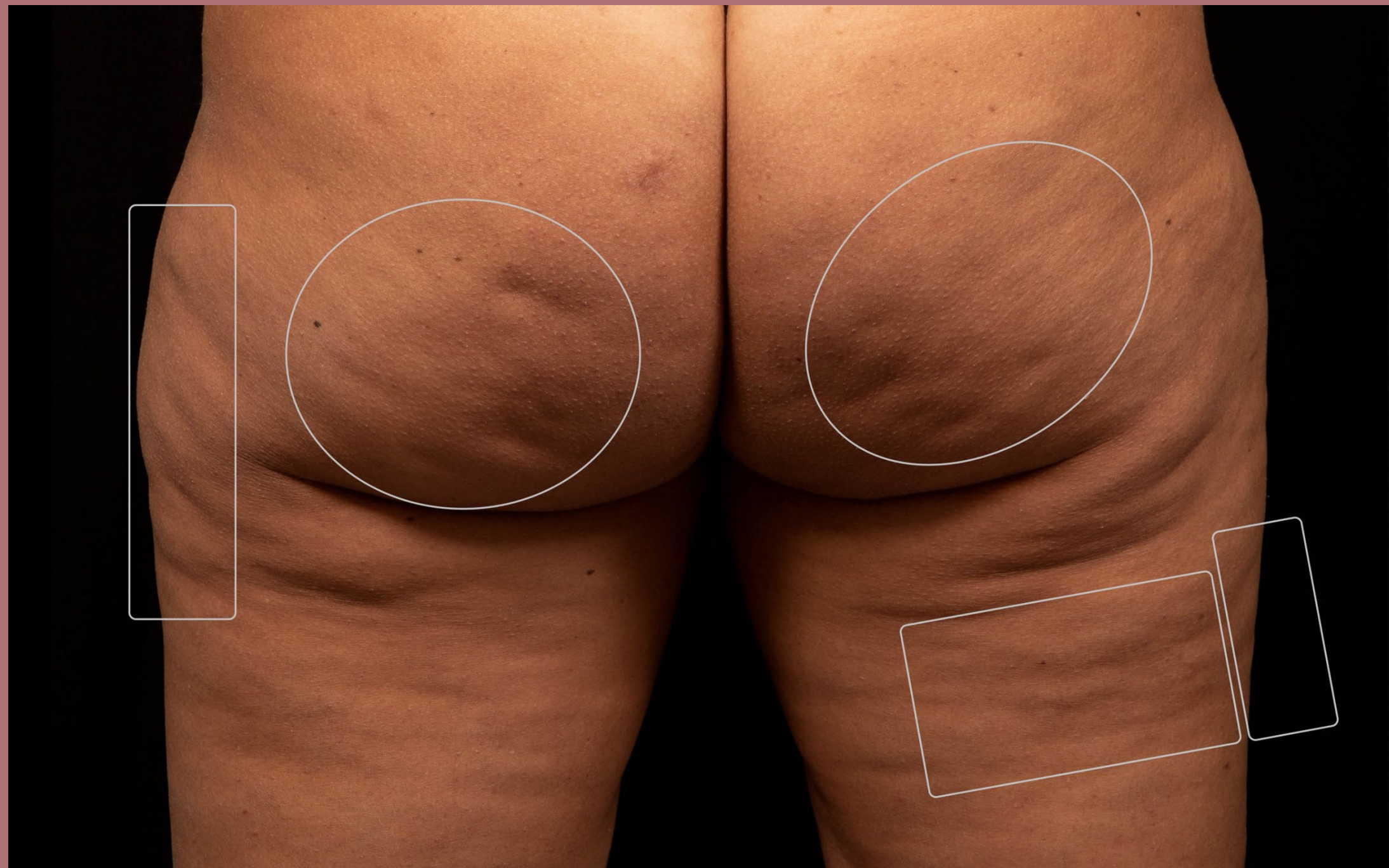


**AFTER 3 MONTHS**

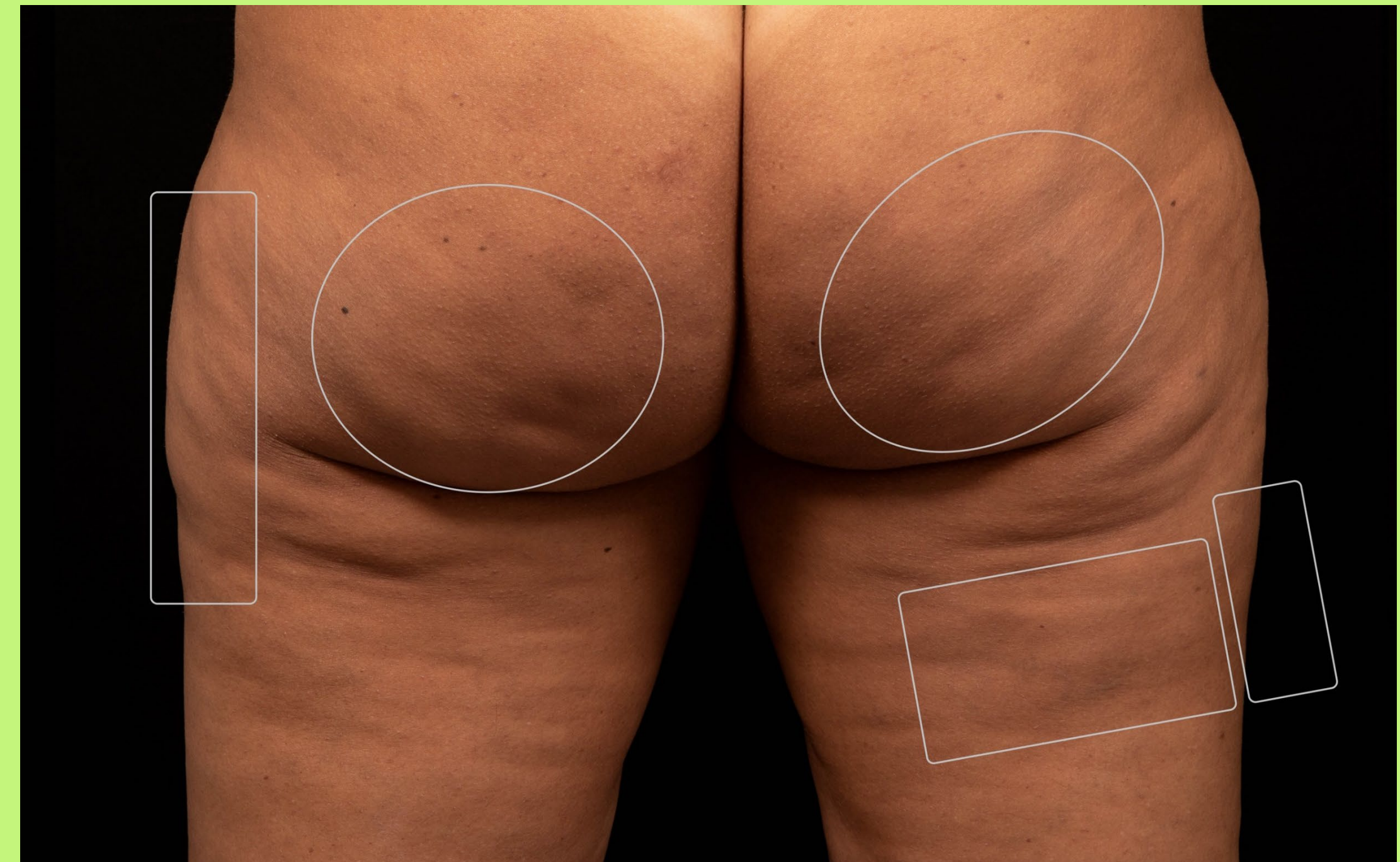




**BEFORE**

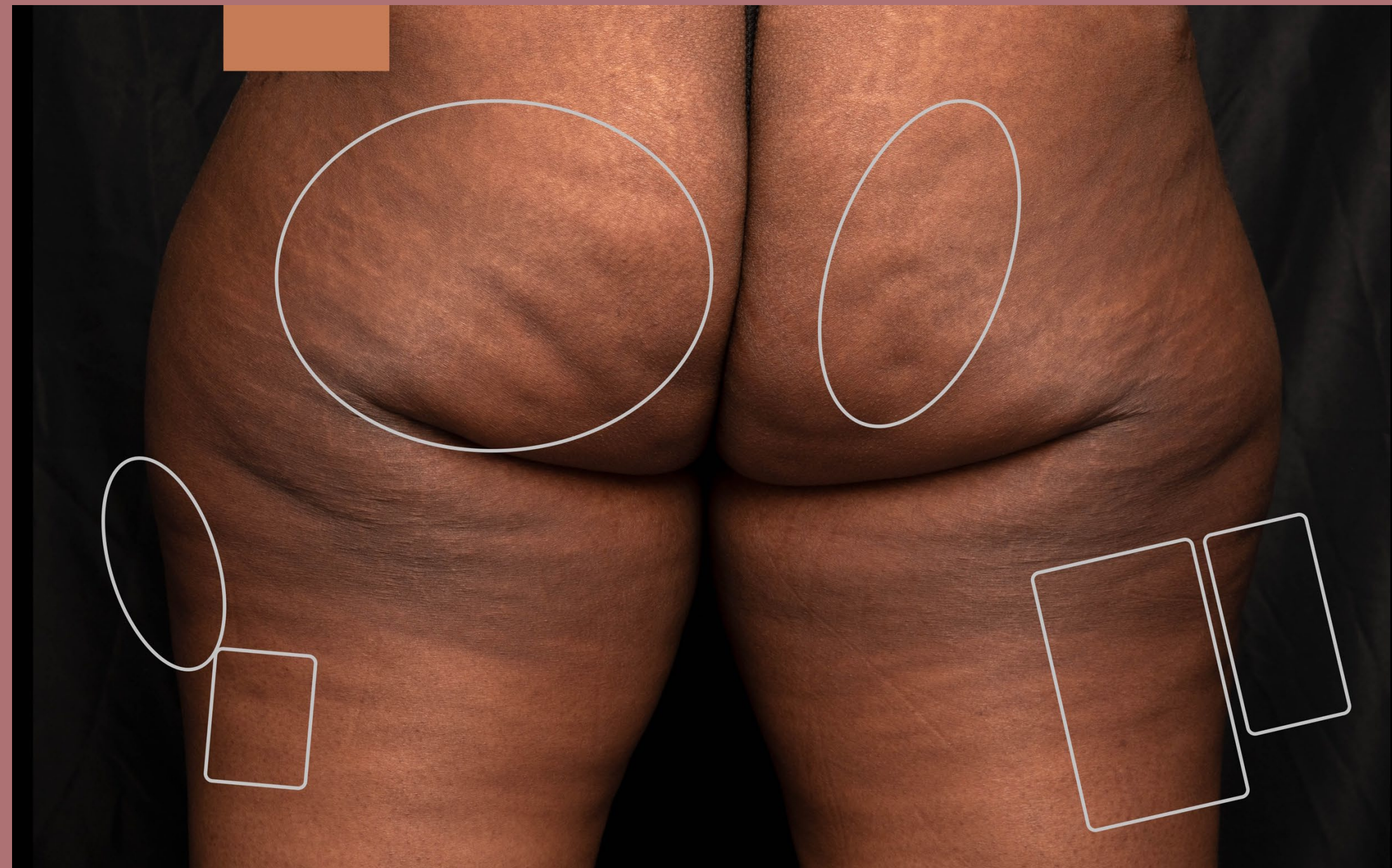


**AFTER 3 MONTHS**

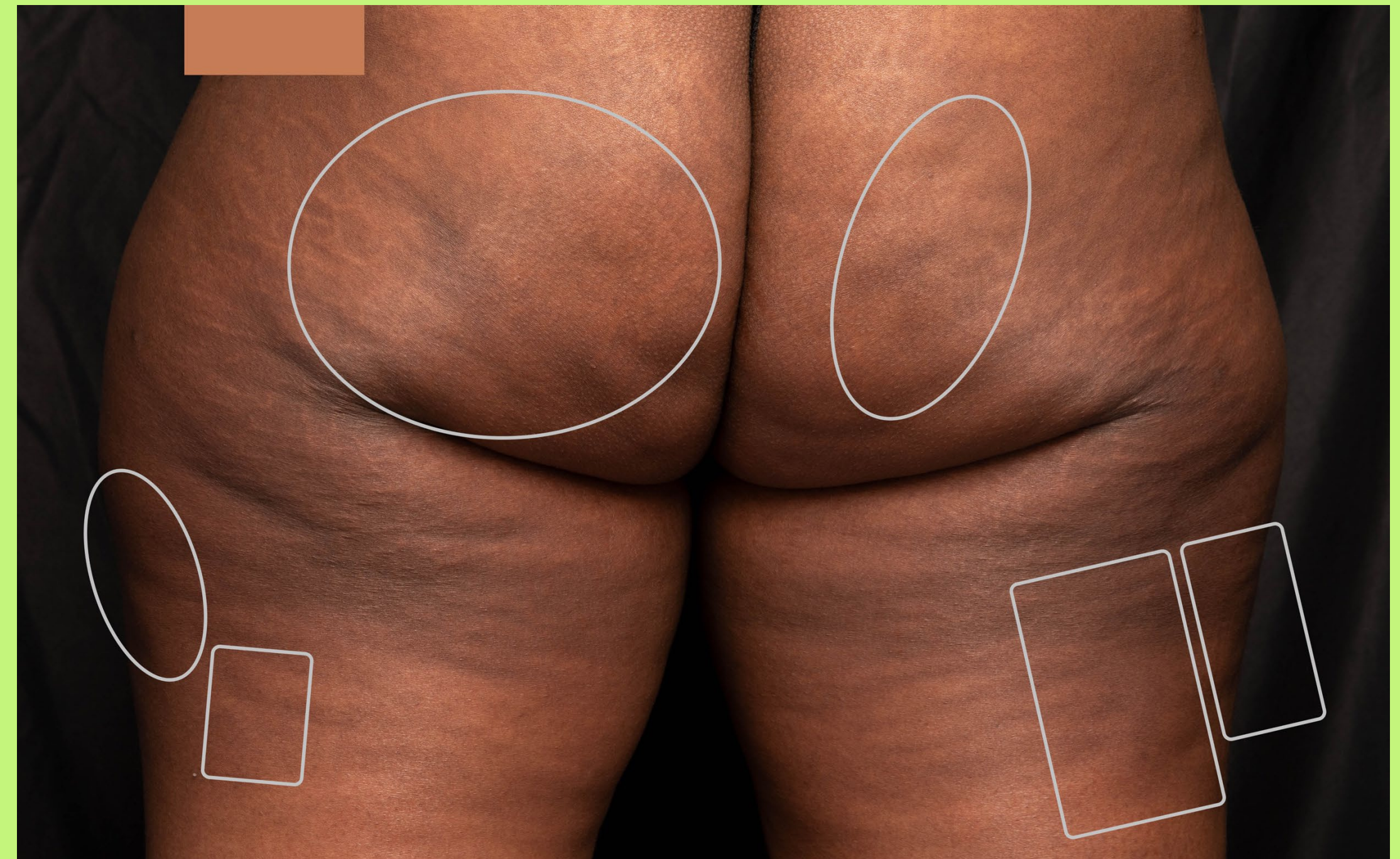




**BEFORE**

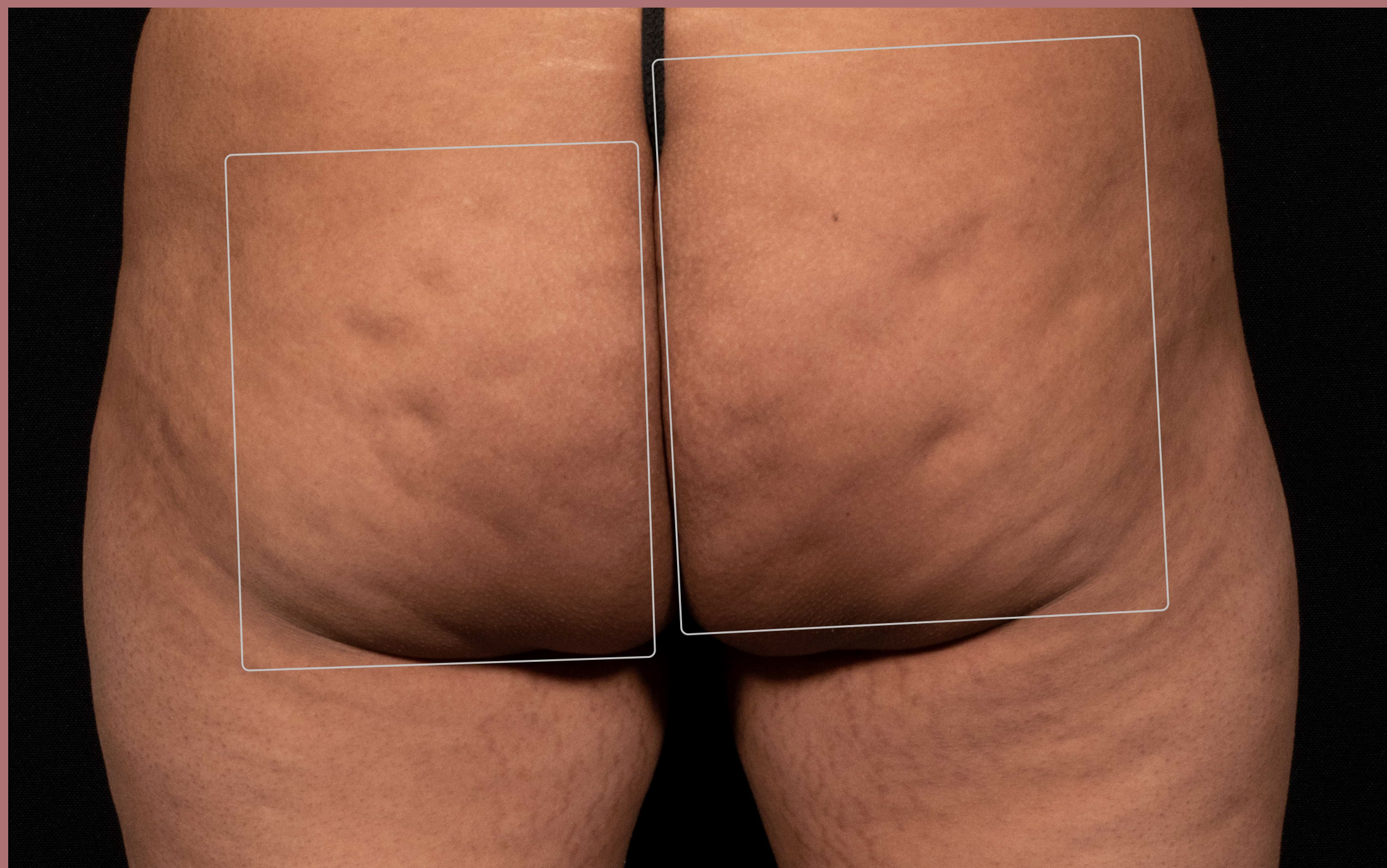


**AFTER 3 MONTHS**





**BEFORE**

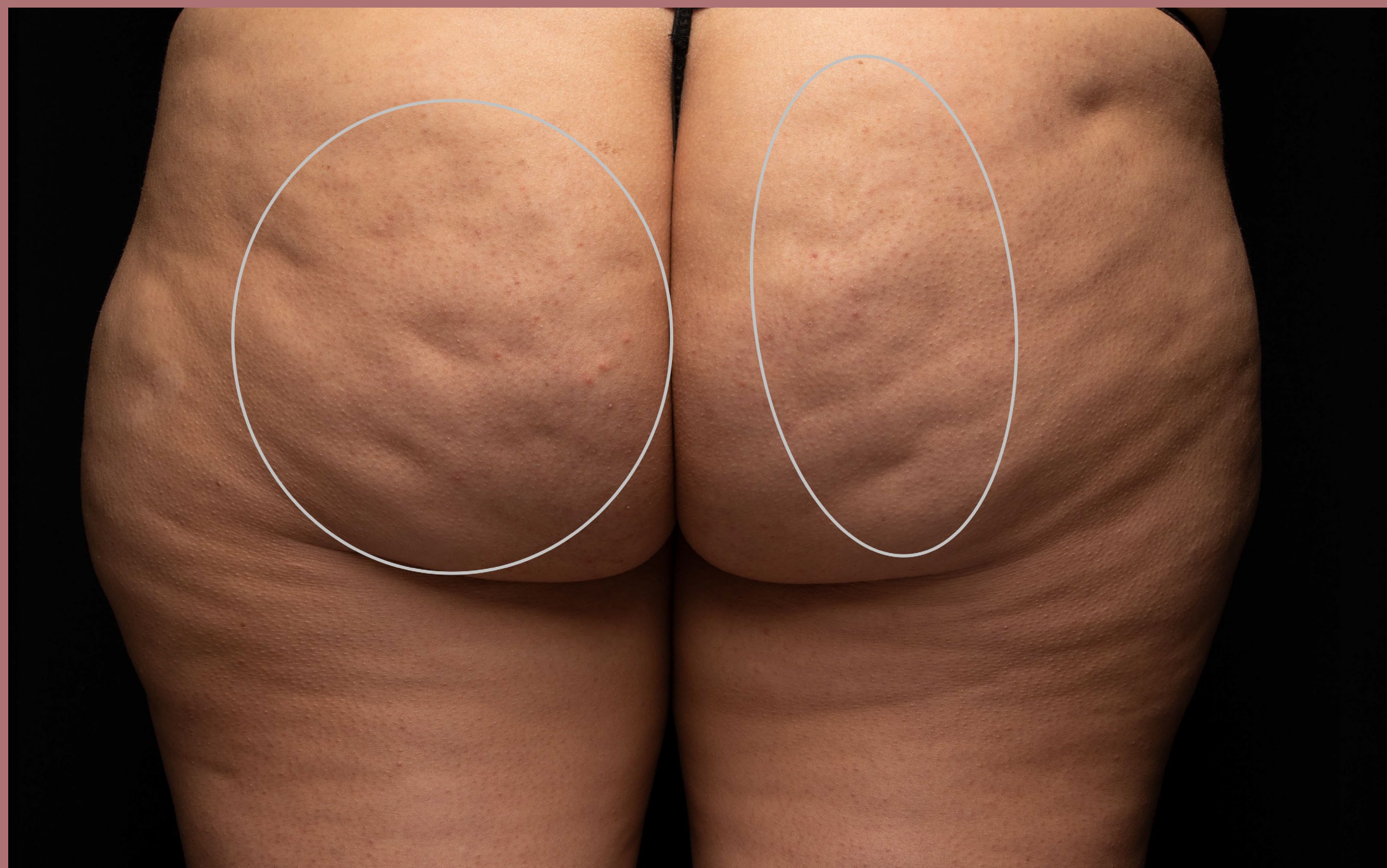


**AFTER 3 MONTHS**





**BEFORE**

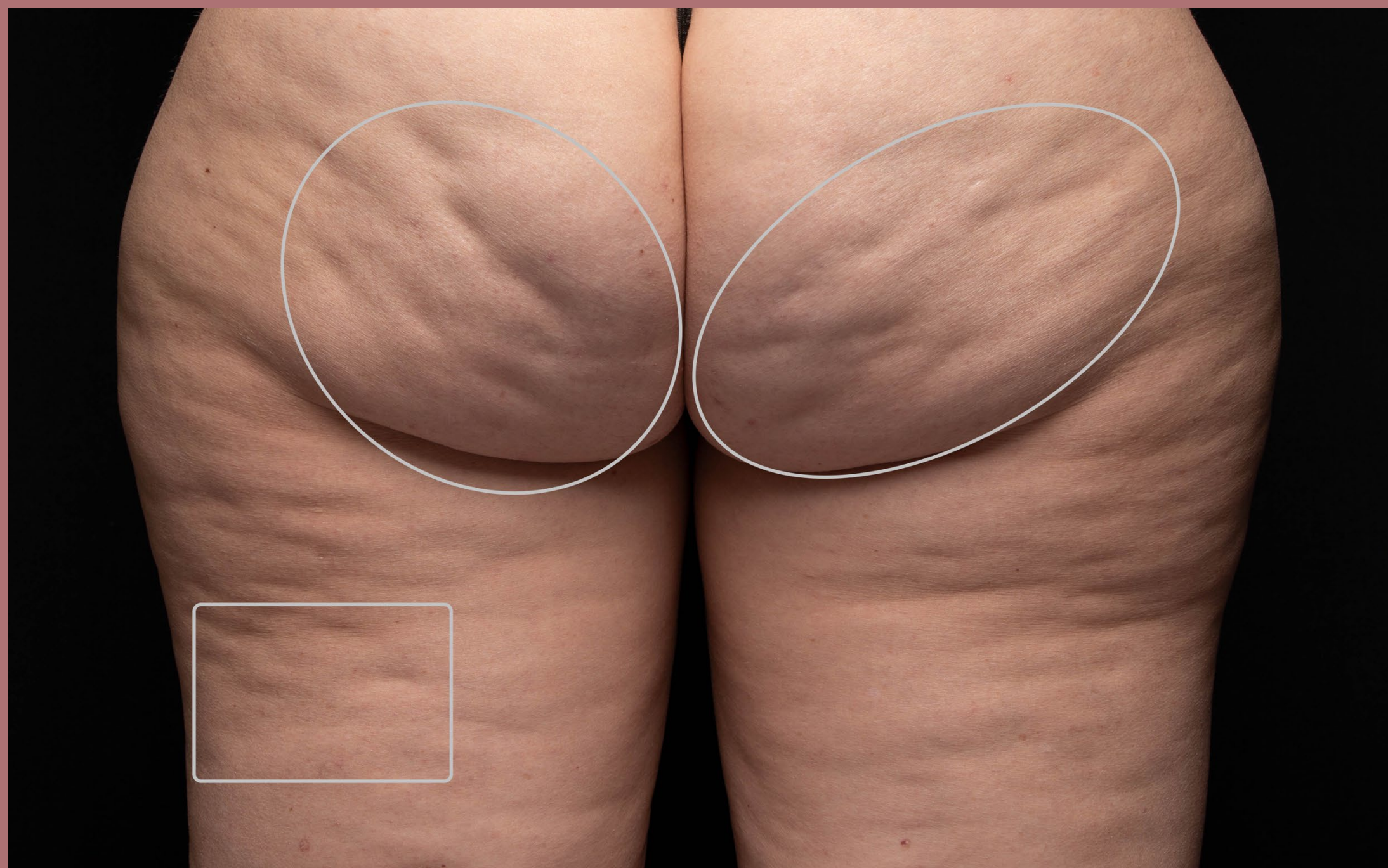


**AFTER 3 MONTHS**

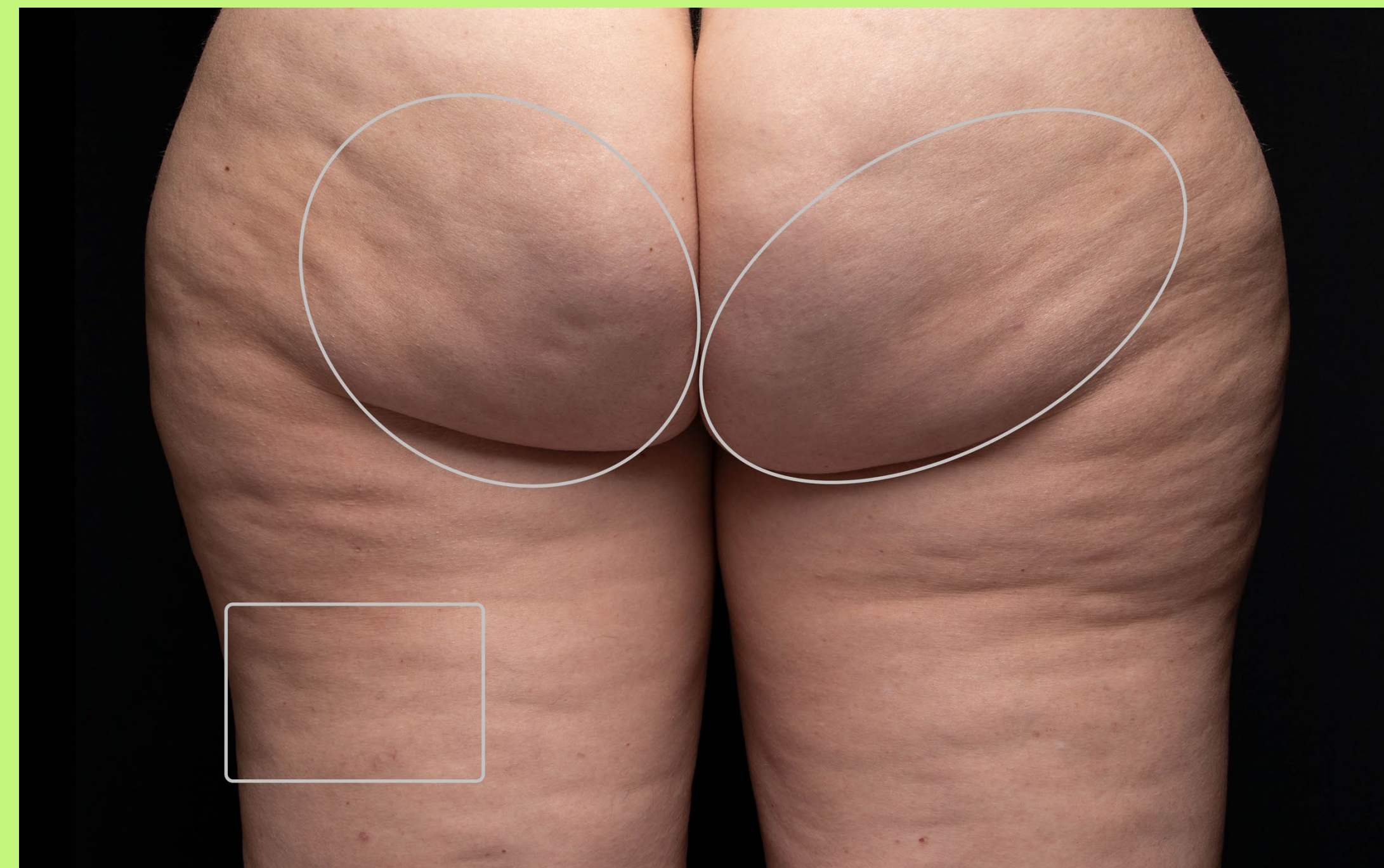




**BEFORE**



**AFTER 3 MONTHS**





## INTENDED USE + SAFETY

Avéli™ Precision Cellulite Release Device is indicated for temporary reduction in the appearance of cellulite in the buttocks and thigh areas of adult females as supported by clinical data demonstrating benefits through three months of observation.

The most common side effects reported were mild pain within the first 24 hours and bruising and tenderness to the touch which is typically resolved within 30 days. Most patients returned to normal activities within one day of the procedure. As with any medical procedure, there are associated risks. Refer to the Instructions for Use at [revelleaesthetics.com/IFU](https://revelleaesthetics.com/IFU) for full safety information.

## CONTRAINDICATIONS

Avéli should not be used on patients who have (or who are):

- Coagulant disorders / on anticoagulant medications
- Diabetic
- Had recent surgery (6 weeks)
- Pregnant
- Severe anemia
- Skin infections/ open lesions
- Tumors
- Uncontrolled hypertension
- Varicose veins (in the area of treatment)





**NO MORE**

**NONSENSE**